



SHIIR

EMPIRE

A decorative interpretation of the quintessential landmark, Empire towers - like its skyline namesake - above a blossoming geometric field. Sequenced and sophisticated, it is also temptingly curvaceous. A dichotomy of design, finely hand-knotted, rendered in wool and shimmering silk - upon which the possibilities are endless, as in the Empire State itself.

EMPIRE

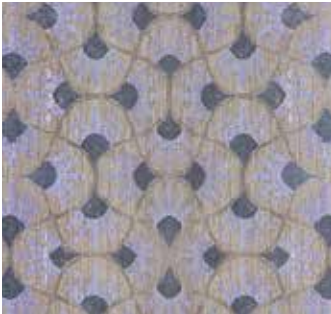


Origin
Made in India

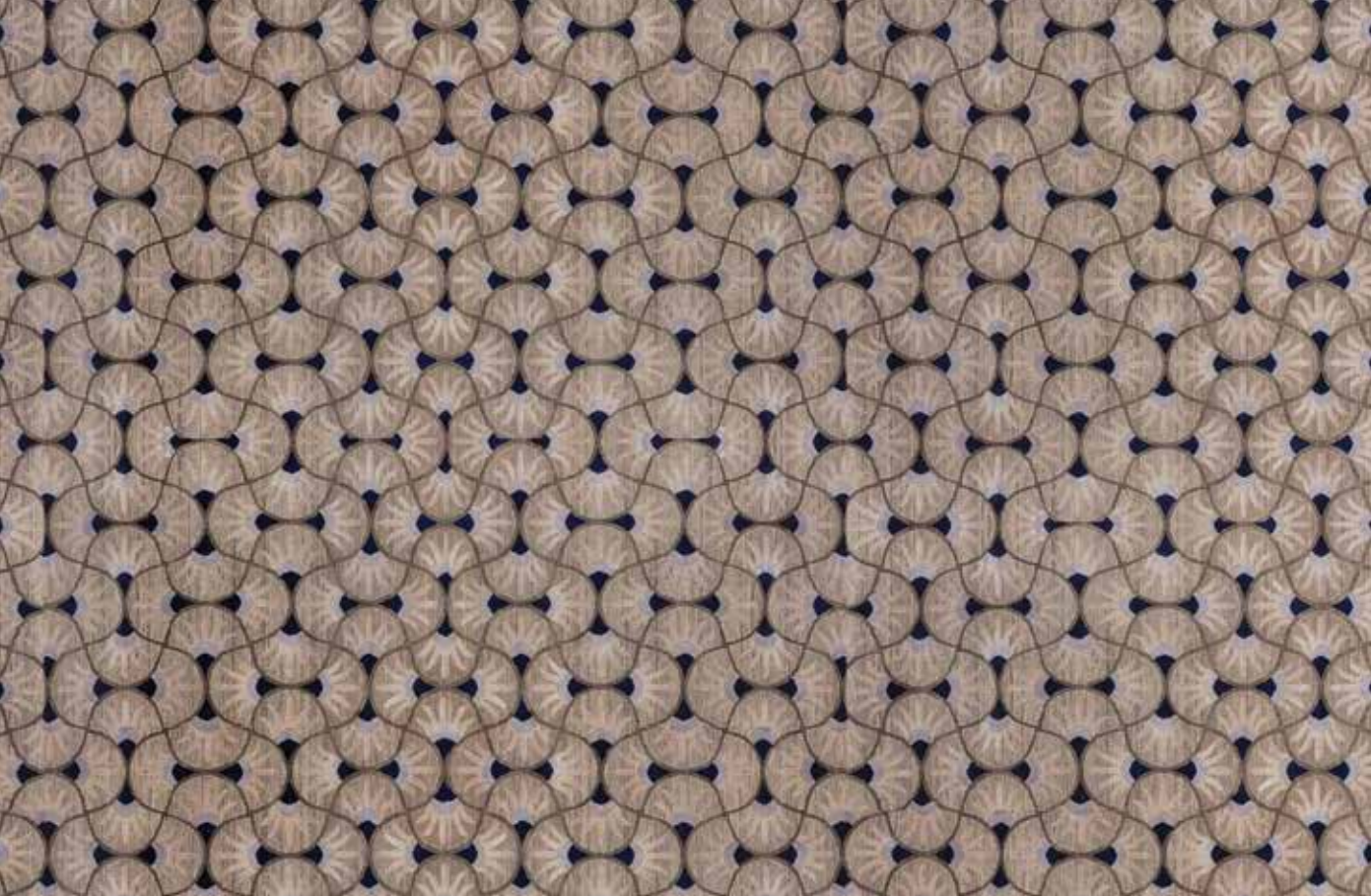
Material
Wool & Silk

Size
Shown as 9x12' rug

Moonstone



Havana



EMPIRE



Origin

Made in India

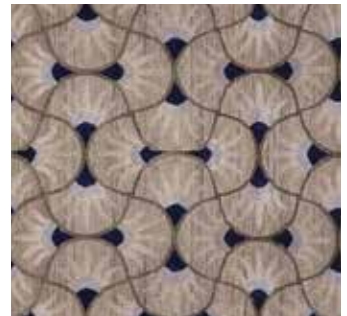
Material

Wool & Silk

Size

Shown as 9x12' rug

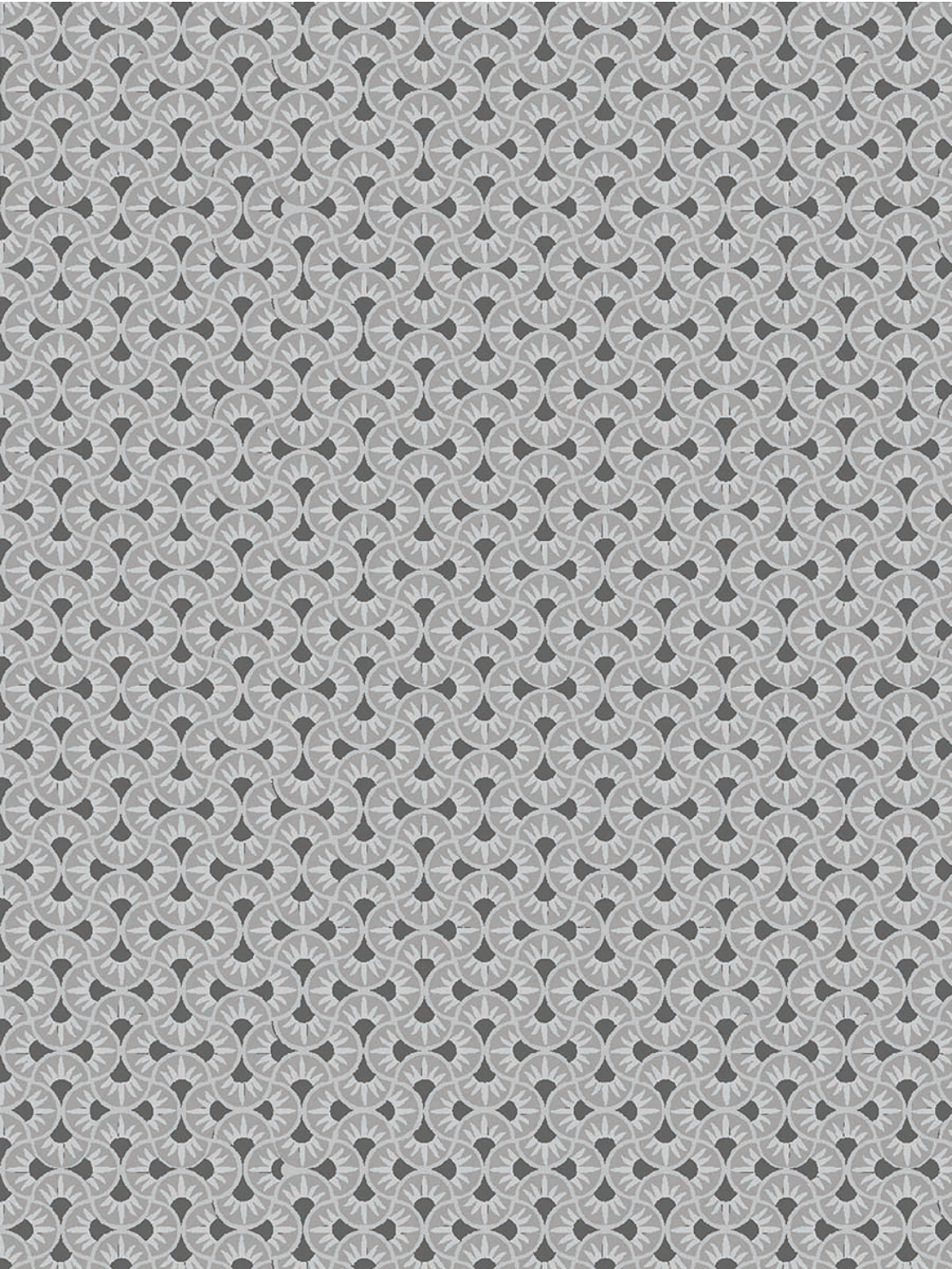
Havana



Moonstone



EMPIRE



Full pattern rendering shown as 9x12' rug