



SHIIR

## MERRIN

Distinguished by a quartet of textures - solid, striped, diamond patterned and flat woven - Merrin displays an organic simplicity of design. It interests, in the most subtle of ways. It excites - approachably. Above all, it beautifies - ever so quietly.

# MERRIN



*Origin*  
Made in India

*Material*  
Cashmere & Wool

*Size*  
Shown as sample size rug

*Gull*



*Lena*



*Powder*



*Ripple*



*Chantilly*





# MERRIN

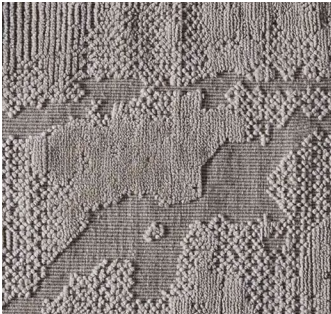


*Origin*  
Made in India

*Material*  
Cashmere & Wool

*Size*  
Shown as sample size rug

Chantilly



Lena



Powder



Ripple



Gull



# MERRIN



*Origin*  
Made in India

*Material*  
Cashmere & Wool

*Size*  
Shown as sample size rug

Chantilly



Gull



Powder



Ripple



Lena





# MERRIN



*Origin*  
Made in India

*Material*  
Cashmere & Wool

*Size*  
Shown as sample size rug

Chantilly



Gull



Lena



Ripple



Powder



# MERRIN



*Origin*  
Made in India

*Material*  
Cashmere & Wool

*Size*  
Shown as 9x12' rug

*Chantilly*



*Gull*



*Lena*



*Powder*



*Ripple*





MERRIN



*Full pattern rendering shown as 9x12' rug*