



SHIIR

## NIMBUS

A truly ethnographic rug informed by primitive Ikats, Nimbus is at once painterly, calligraphic, and even tribal in nature. Abundantly patterned yet restrained by an orderly sense of repetition, its multi-cultural influences are matched by an unerring amalgam of fibers, including silk and wool.

*Nimbus Nocturne*

# NIMBUS



*Origin*  
Made in India

*Material*  
Wool & Silk

*Size*  
Shown as sample size rug

Chestnut



Mist



Nocturne



Cayenne



# NIMBUS



*Origin*  
Made in India

*Material*  
Wool & Silk

*Size*  
Shown as 9x12' rug

Cayenne



Mist



Nocturne



Chestnut



# NIMBUS



*Origin*  
Made in India

*Material*  
Wool & Silk

*Size*  
Shown as sample size rug

Cayenne



Chestnut



Nocturne



Mist



# NIMBUS



*Origin*  
Made in India

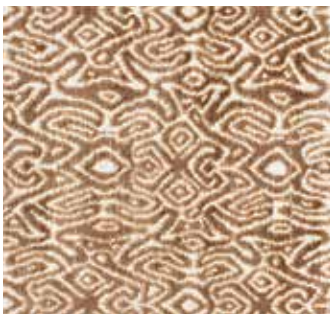
*Material*  
Wool & Silk

*Size*  
Shown as sample size rug

Cayenne



Chestnut



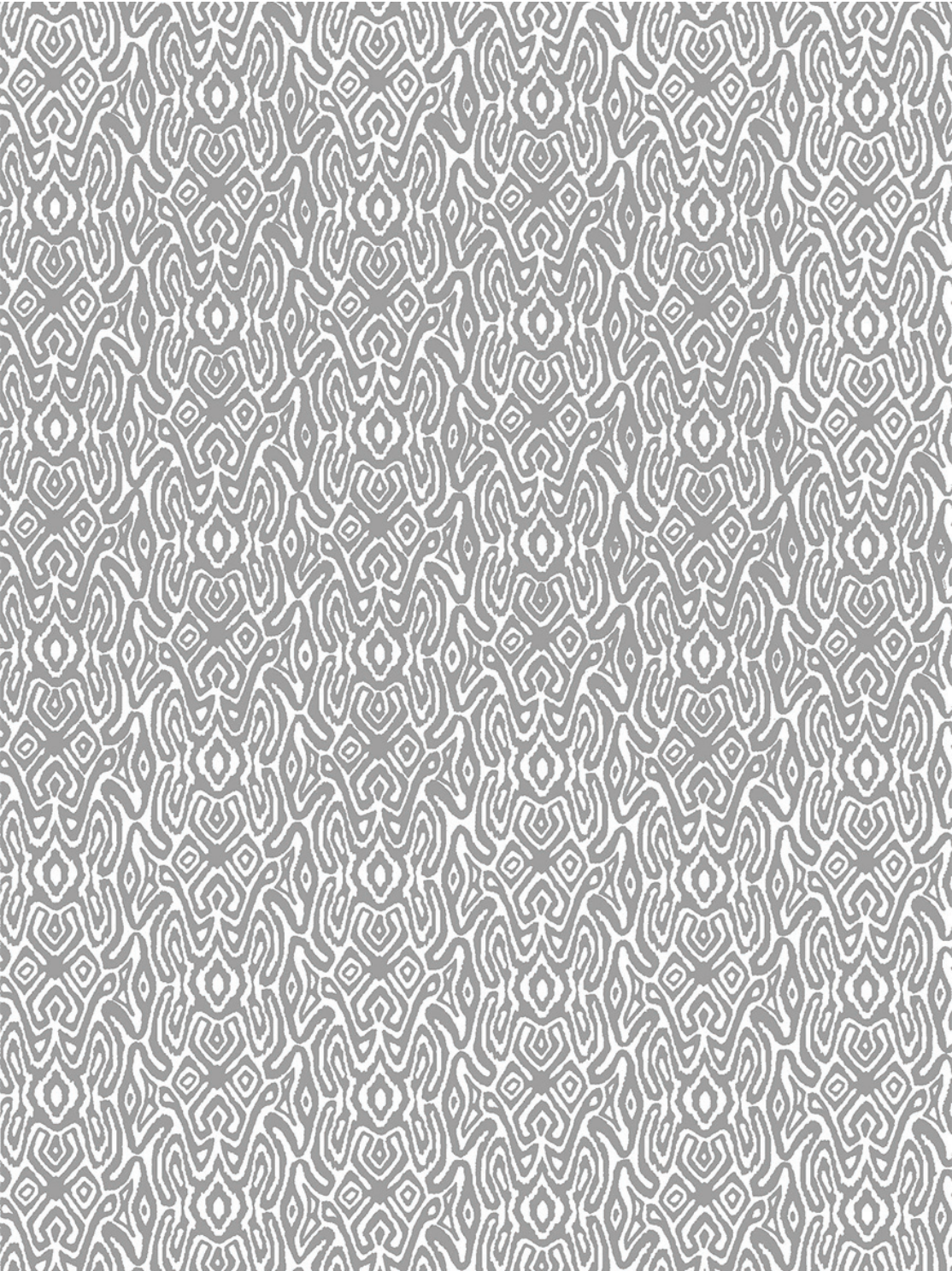
Mist



Nocturne



NIMBUS



*Full pattern rendering shown as 9x12' rug*