



SHIIR

ROVINE

Ancient civilizations recalled. Foundations unearthed. Ruins remaining. And yet - and yet - the clear and unmistakable outline of form, ever-present, reminds, potently, of the import of structure. The complexity of permanence. And the significance of reiteration in its most elemental state.



Rovine Marmo

ROVINE



Origin

Made in India

Material

Wool & Silk

Size

Shown as sample size rug

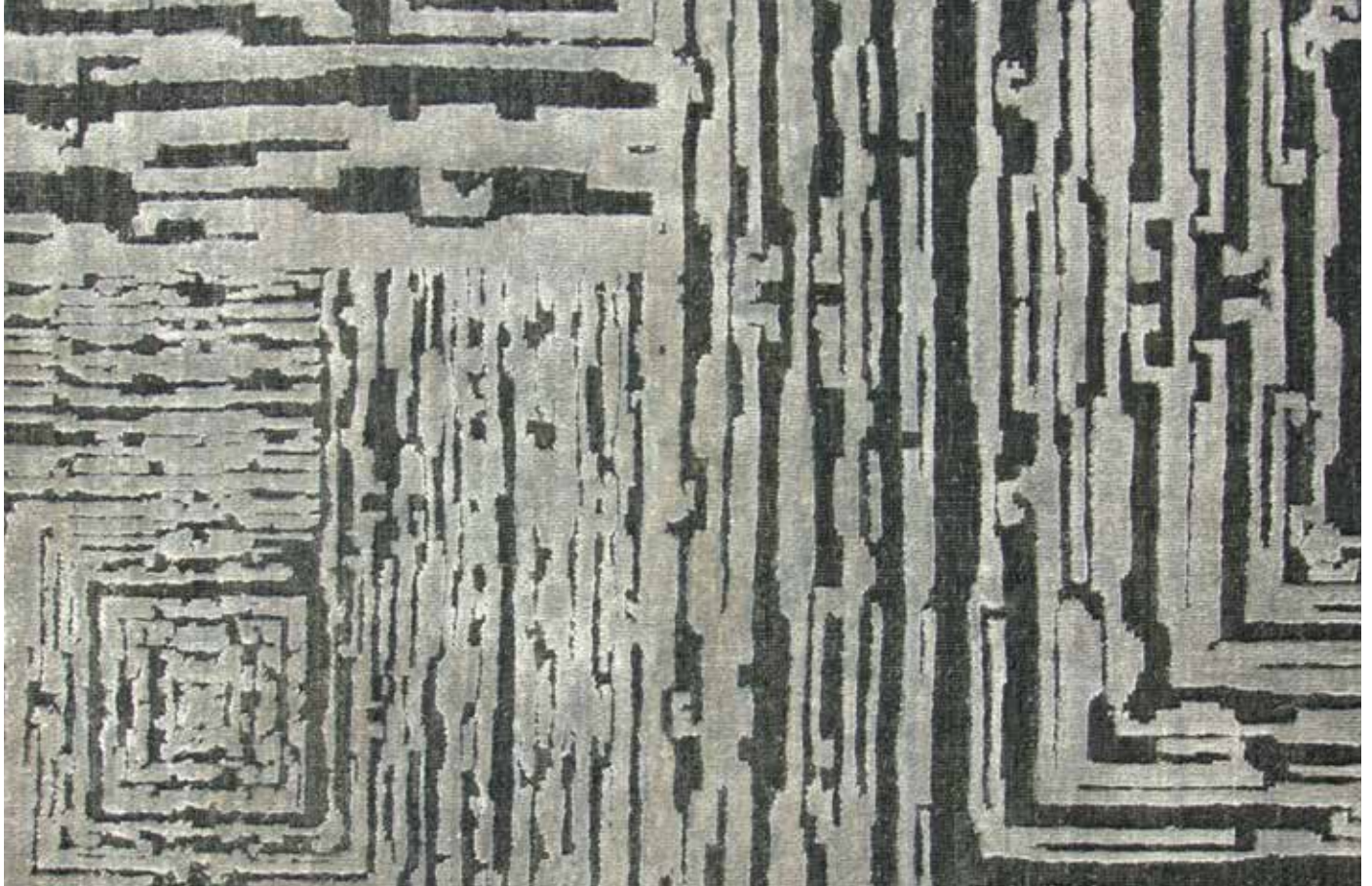
Marmo



Terra



Lapis



ROVINE



Origin

Made in India

Material

Wool & Silk

Size

Shown as sample size rug

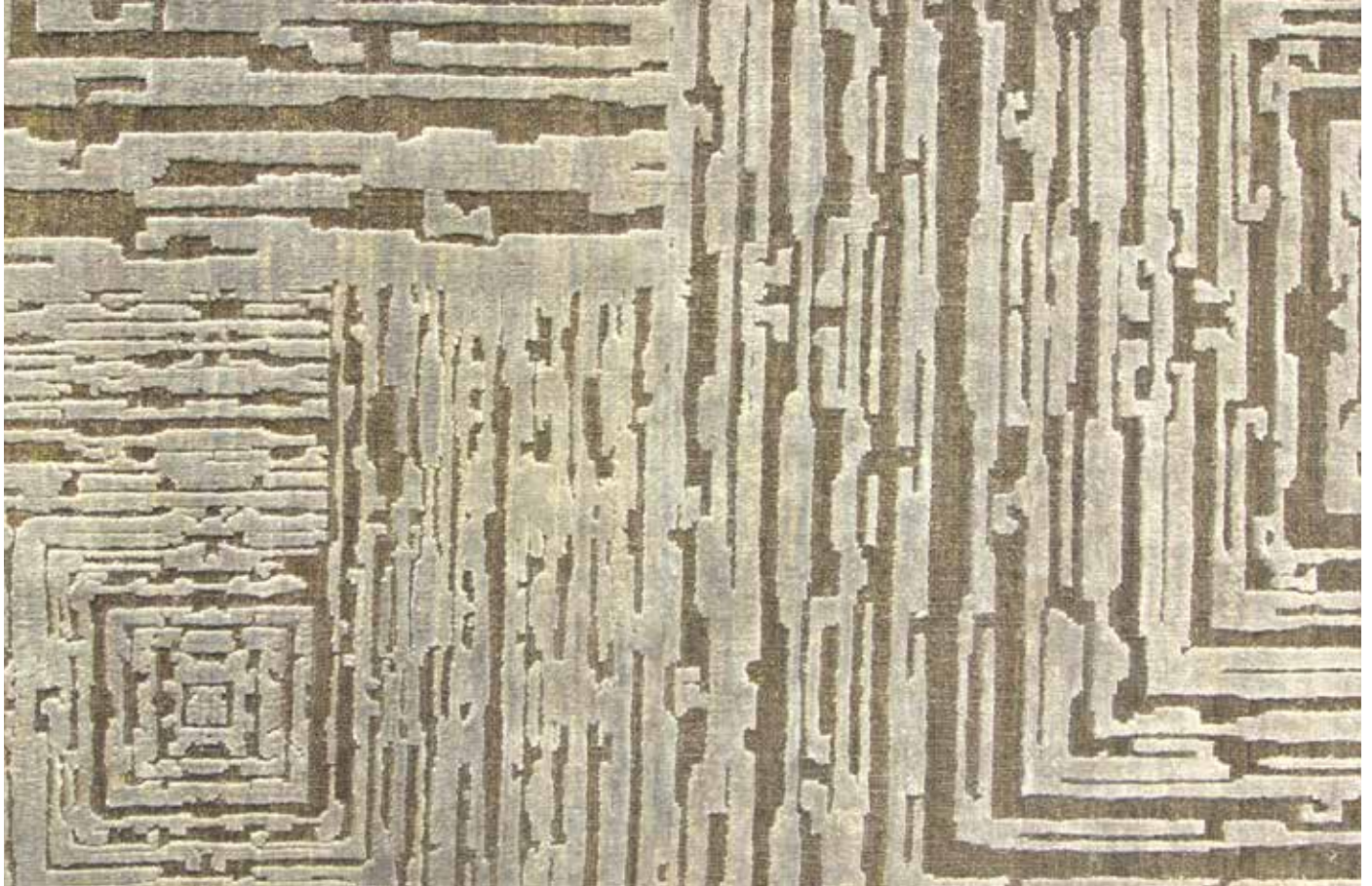
Lapis



Terra



Marmo



ROVINE



Origin

Made in India

Material

Wool & Silk

Size

Shown as sample size rug

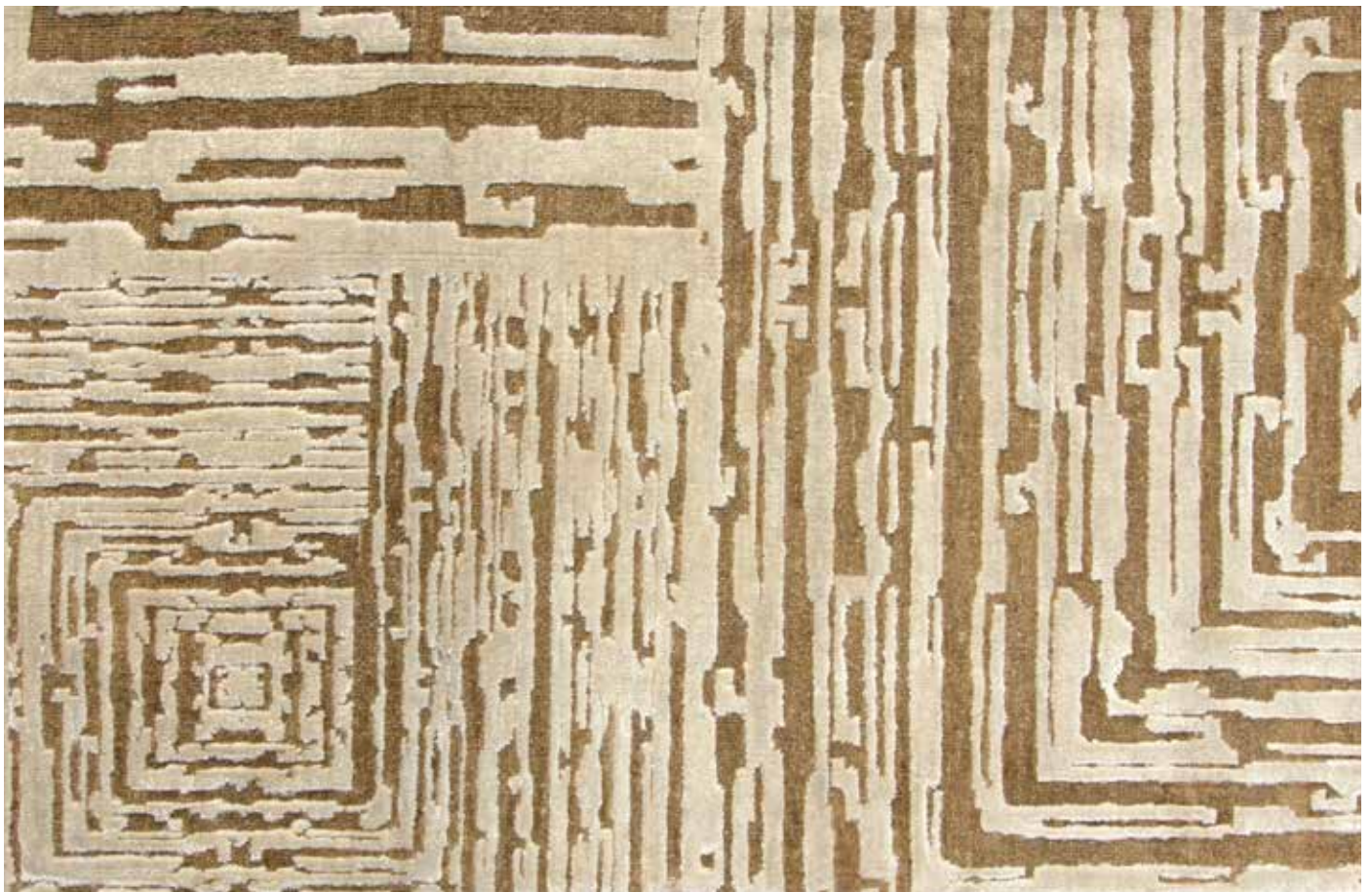
Lapis



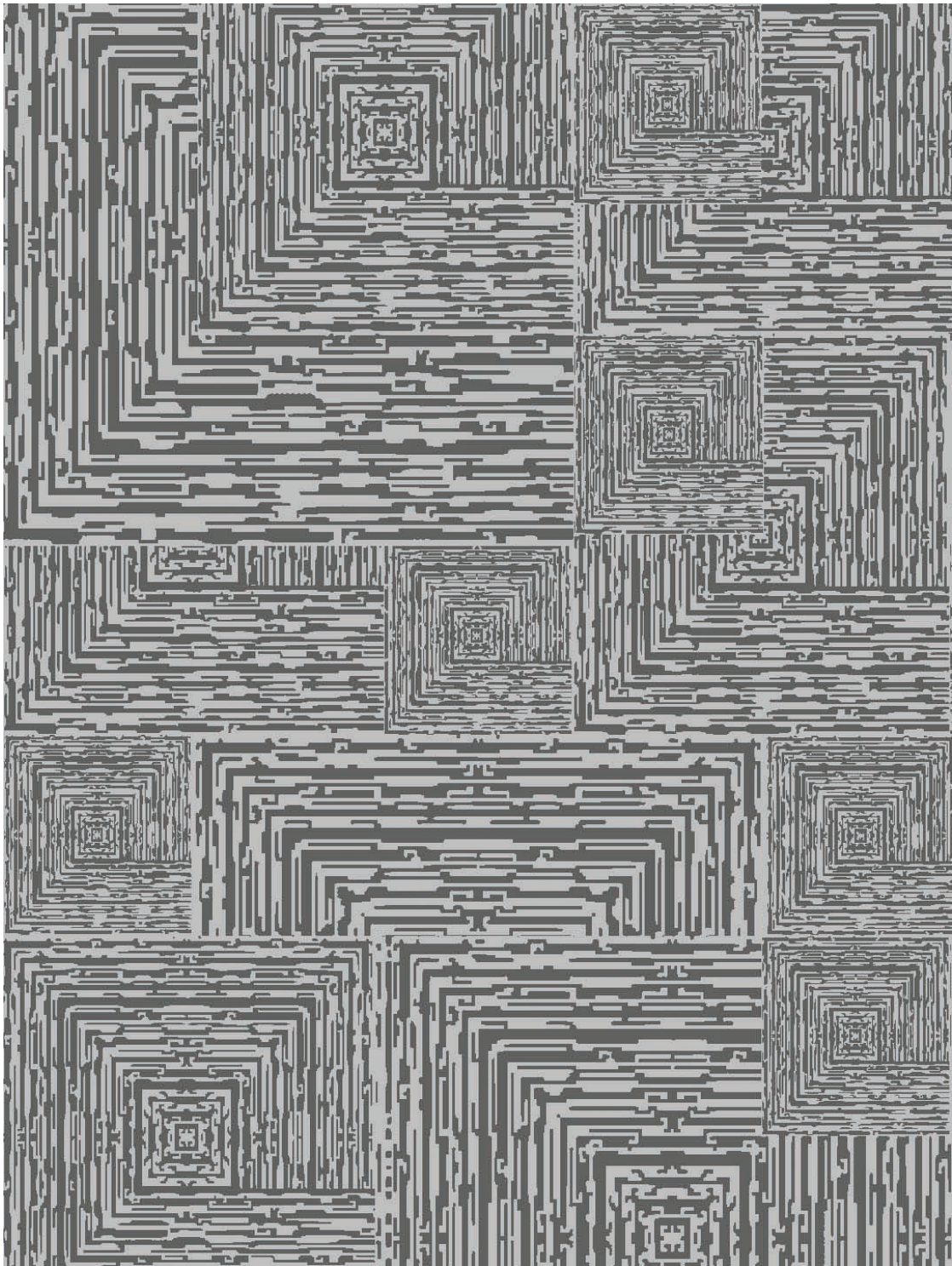
Marmo



Terra



ROVINE



Full pattern rendering shown as 9x12' rug