



SHIIR

ESHA

A recent visit to India included an afternoon spent sitting cross-legged over tea with one of the country's master weavers, who shyly – yet proudly – shared with us a prized possession: an antique rug crafted by the renowned weavers of South Asia's Baluch tribe. From that afternoon, our Esha interpretation was born. Featuring the geometric patterns and rich colors for which Baluch rugs are celebrated, Esha is both durable and forgiving, making it especially well-suited for commercial applications. Historical character and lasting functionality? We say yes! Available in three standard constructions: hand-knotted, Turkish; hand-knotted, Persian; and hand-knotted, Persian oxidized.

Kiss, Hand-knotted, Persian, Cashmere (top). Glint, Hand-knotted, Persian, Wool & Silk (middle). Sway, Hand-knotted, Turkish, Wool (bottom).



SHIIR

ESHA

HAND-KNOTTED, PERSIAN. CASHMERE

Oyana. Hand-knotted, Persian. Cashmere

ESHA



Origin

Made in India

Material

Cashmere

Construction

Hand-knotted, Persian

Size

Shown as sample size rug

Kiss



Oyana



Andeara



ESHA



Origin

Made in India

Material

Cashmere

Construction

Hand-knotted, Persian

Size

Shown as sample size rug

Andeara



Oyana



Kiss



ESHA



Origin

Made in India

Material

Cashmere

Construction

Hand-knotted, Persian

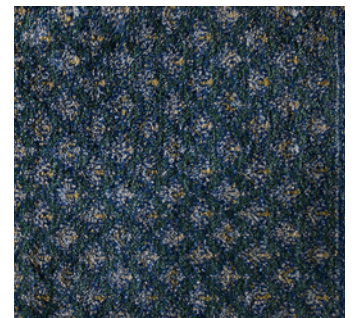
Size

Shown as sample size rug

Kiss



Andeara



Oyana





SHIIR

ESHA

HAND-KNOTTED, PERSIAN. WOOL & SILK

Kasumi. Hand-knotted, Persian. Wool & Silk

ESHA



Origin

Made in India

Material

Wool & Silk

Construction

Hand-knotted, Persian

Finish

Oxidized

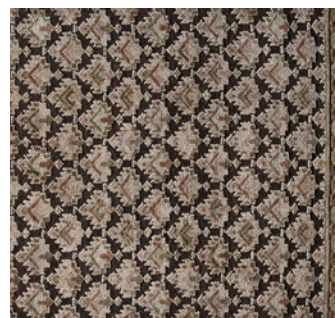
Size

Shown as sample size rug

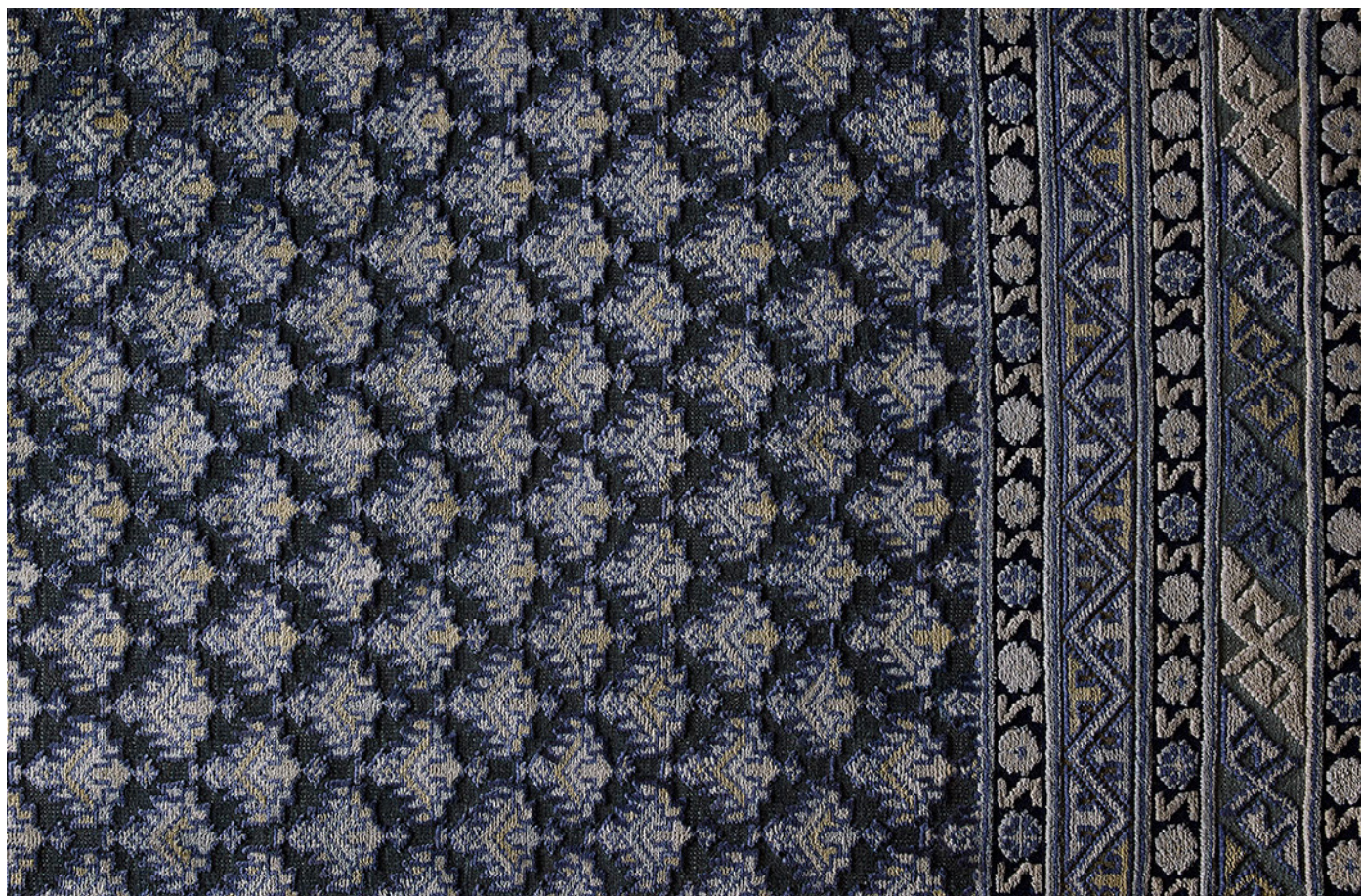
Glint



Kasumi



Banya



ESHA



Origin

Made in India

Material

Wool & Silk

Construction

Hand-knotted, Persian

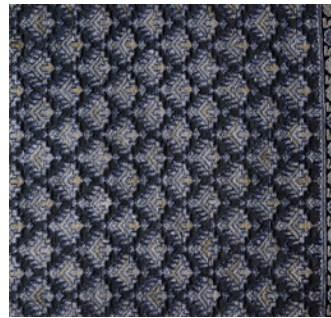
Finish

Oxidized

Size

Shown as sample size rug

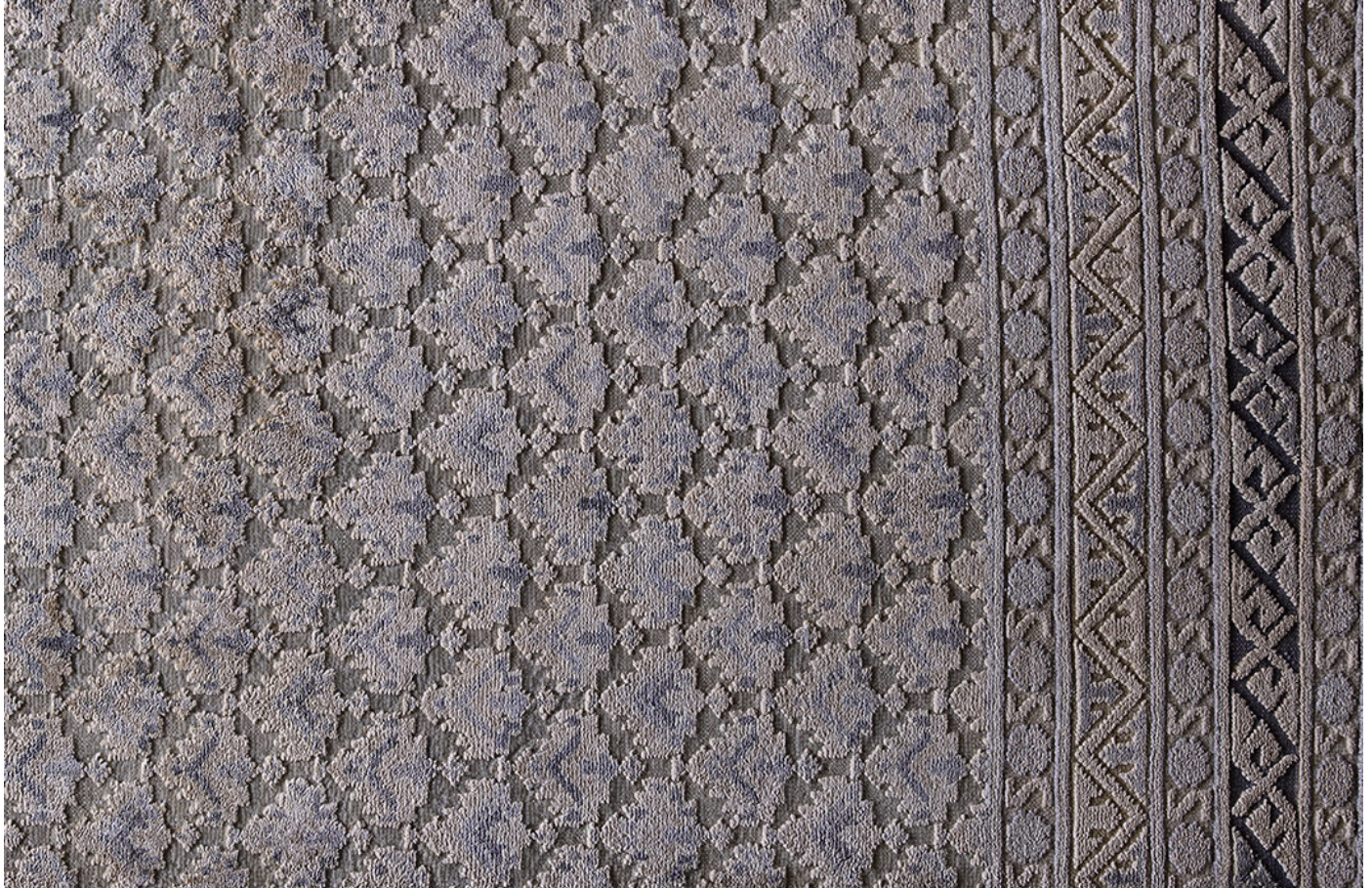
Banya



Kasumi



Glint



ESHA



Origin

Made in India

Material

Wool & Silk

Construction

Hand-knotted, Persian

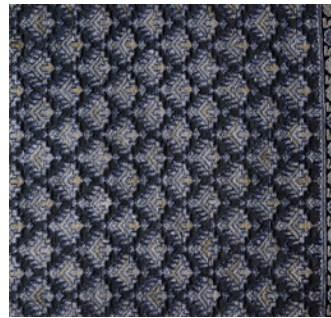
Finish

Oxidized

Size

Shown as sample size rug

Banya



Glint



Kasumi





SHIIR

ESHA

HAND-KNOTTED, TURKISH. WOOL

Yashi. Hand-knotted, Turkish. Wool.

ESHA



Origin

Made in India

Material

Wool

Construction

Hand-knotted, Turkish

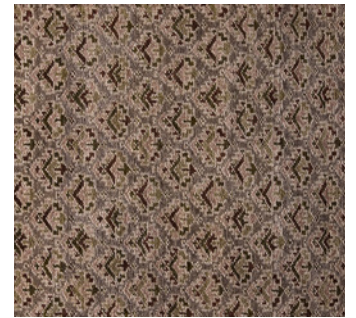
Size

Shown as sample size rug

Lupo



Yashi



Sway



ESHA



Origin

Made in India

Material

Wool

Construction

Hand-knotted, Turkish

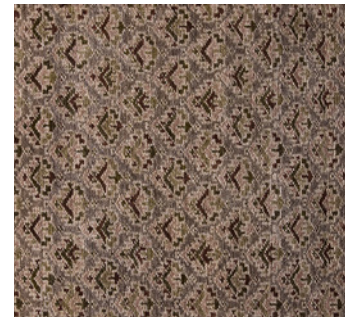
Size

Shown as sample size rug

Sway



Yashi



Lupo



ESHA



Origin

Made in India

Material

Wool

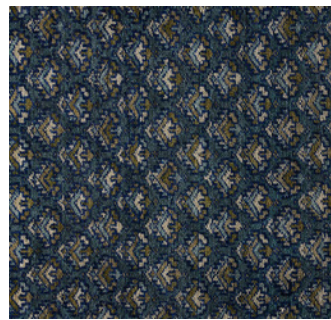
Construction

Hand-knotted, Turkish

Size

Shown as sample size rug

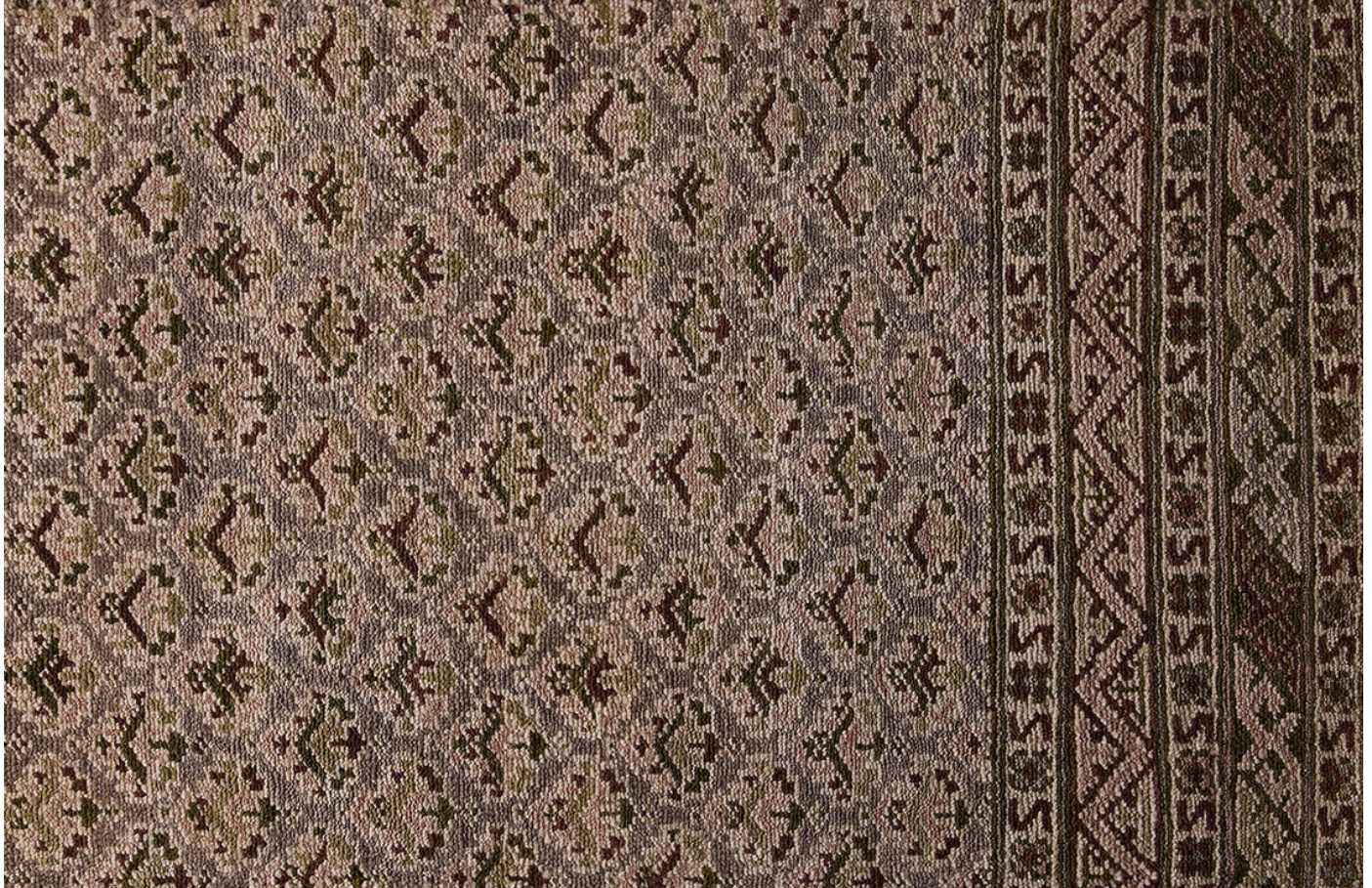
Lupo



Sway



Yashi

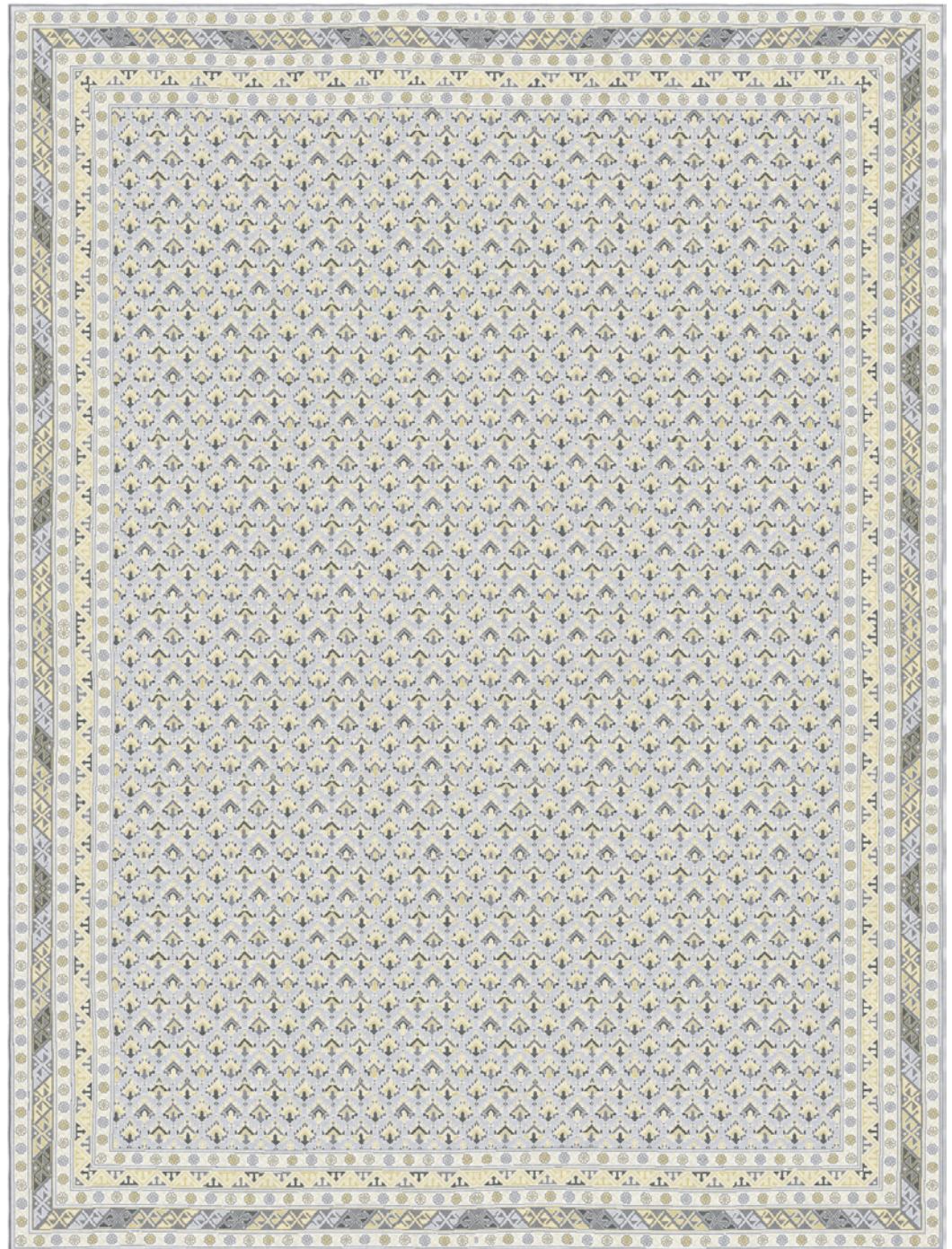




*Made in India
Hand-knotted, Persian
Cashmere
Andeara, Kiss & Oyana*

*Made in India
Hand-knotted, Persian
Wool & Silk
Banya, Glint & Kasumi*

*Made in India
Hand-knotted, Turkish
Wool
Lupo, Sway & Yashi*



Full pattern rendering shown as 9x12' rug