



SHIIR

## LUMA

They say the best designs come from collaboration—like Luma, whose every staggered, alternating stripe feels like the liveliest of conversations. Here, colors trade places, shifting column by column, a rhythm both structured and free. Inspired by Bauhaus ideals, Luma displays a meeting of minds and hands—of Indian weavers, modern designers, worldly cultures and historic influences, all combining in the creation of handcrafts for living. Flatweave construction and available in two standard materials: wool or Polyester (PET).

Robin. Handwoven, flatweave. Wool (top left). Lazuli. Handwoven, flatweave. Wool (right). Avenna. Handwoven, flatweave. PET (bottom left)



SHIIR

LUMA

WOOL

Custom Luma. Handwoven, flatweave. Wool.

# LUMA



## Origin

Made in India

## Material

Wool

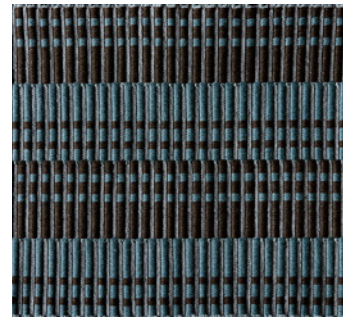
## Construction

Handwoven, Flatweave

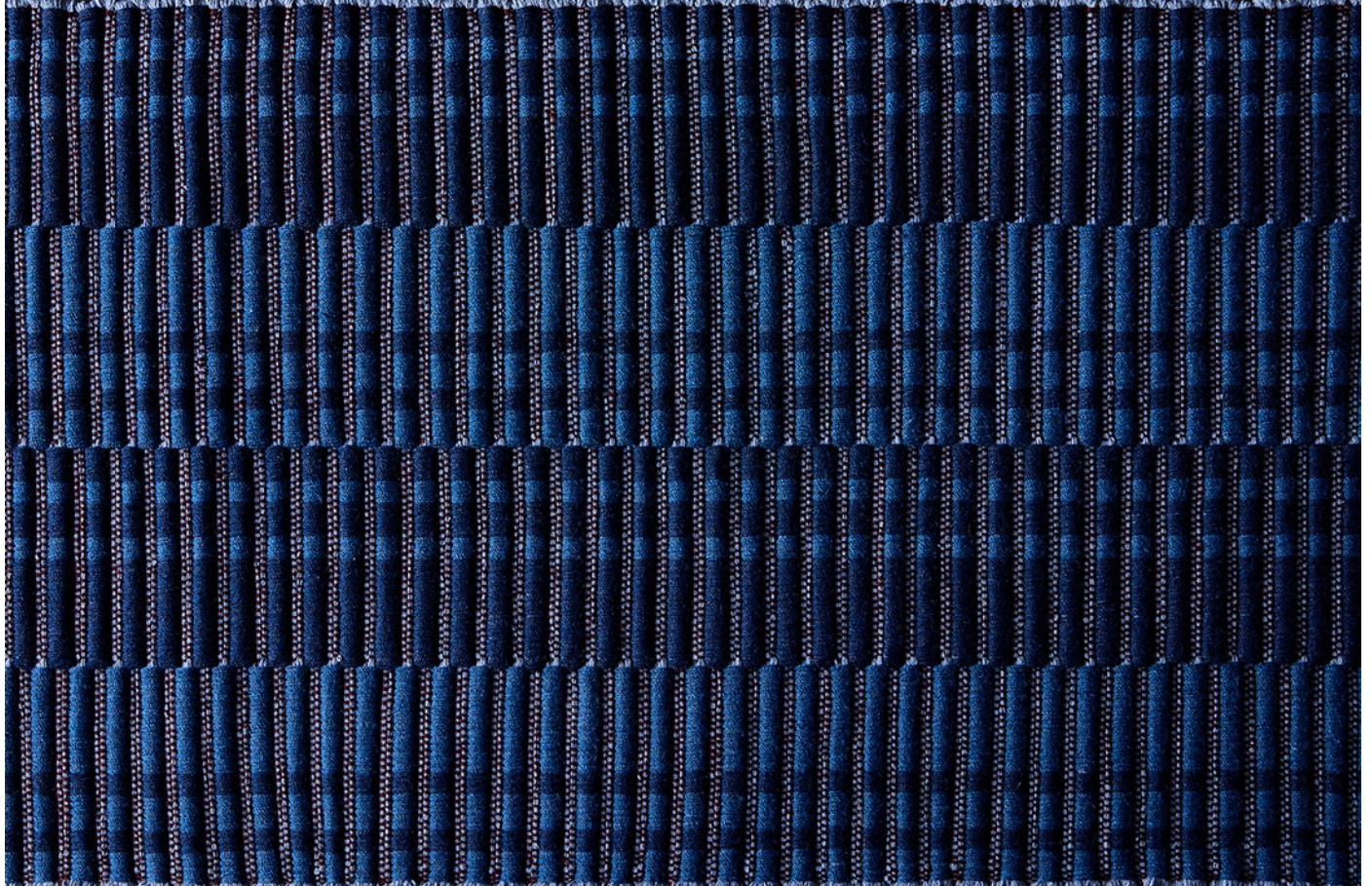
## Size

Shown as sample size rug

Robin



Lazuli



# LUMA



## Origin

Made in India

## Material

Wool

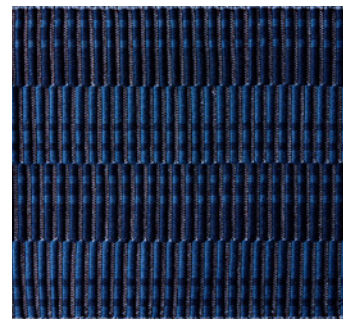
## Construction

Handwoven, Flatweave

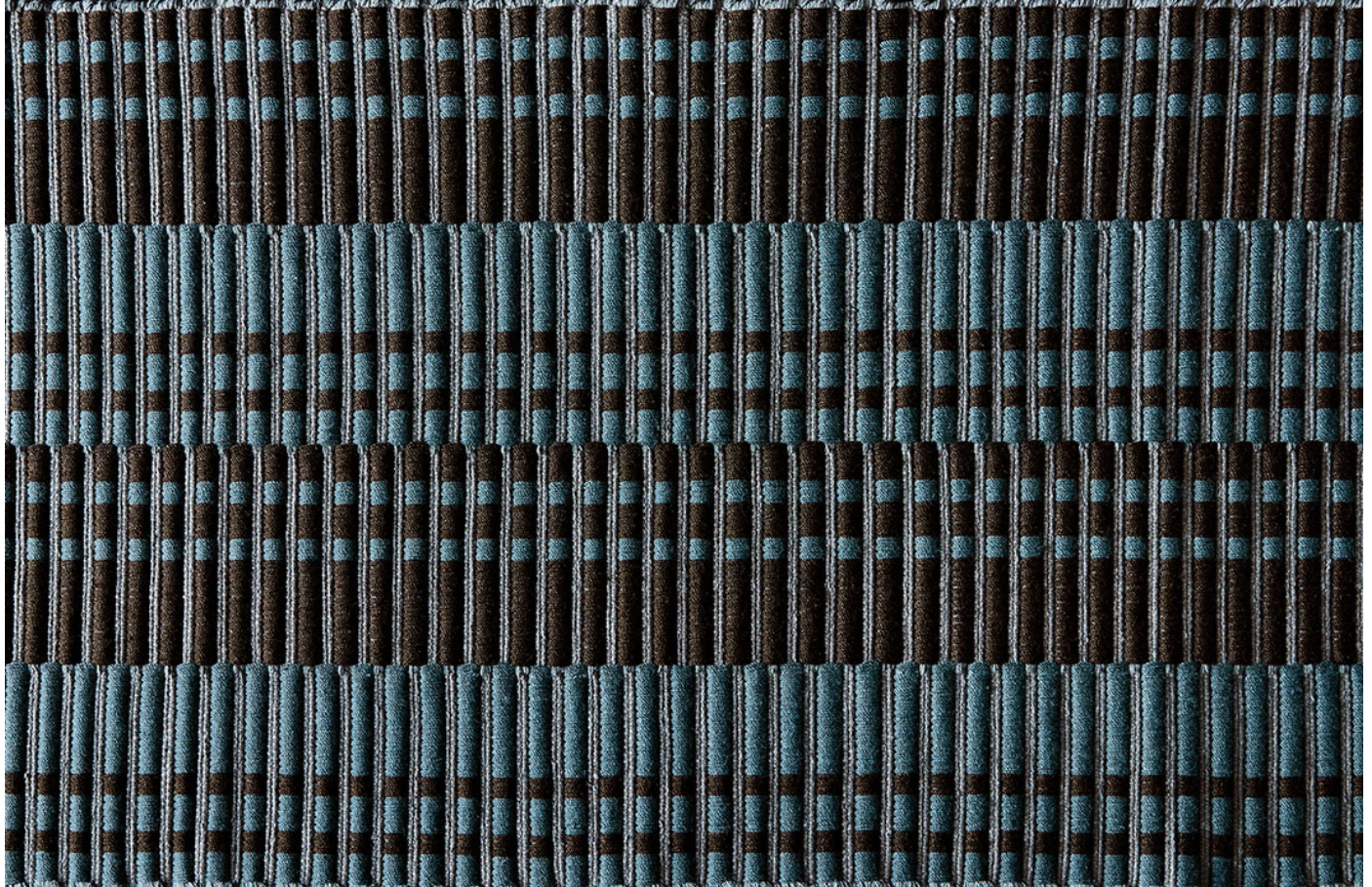
## Size

Shown as sample size rug

Lazuli



Robin





SHIIR

LUMA

POLYESTER (PET)

Avenna. Handwoven, flatweave. PET (bottom left)

# LUMA



## *Origin*

*Made in India*

## *Material*

*Polyester (PET)*

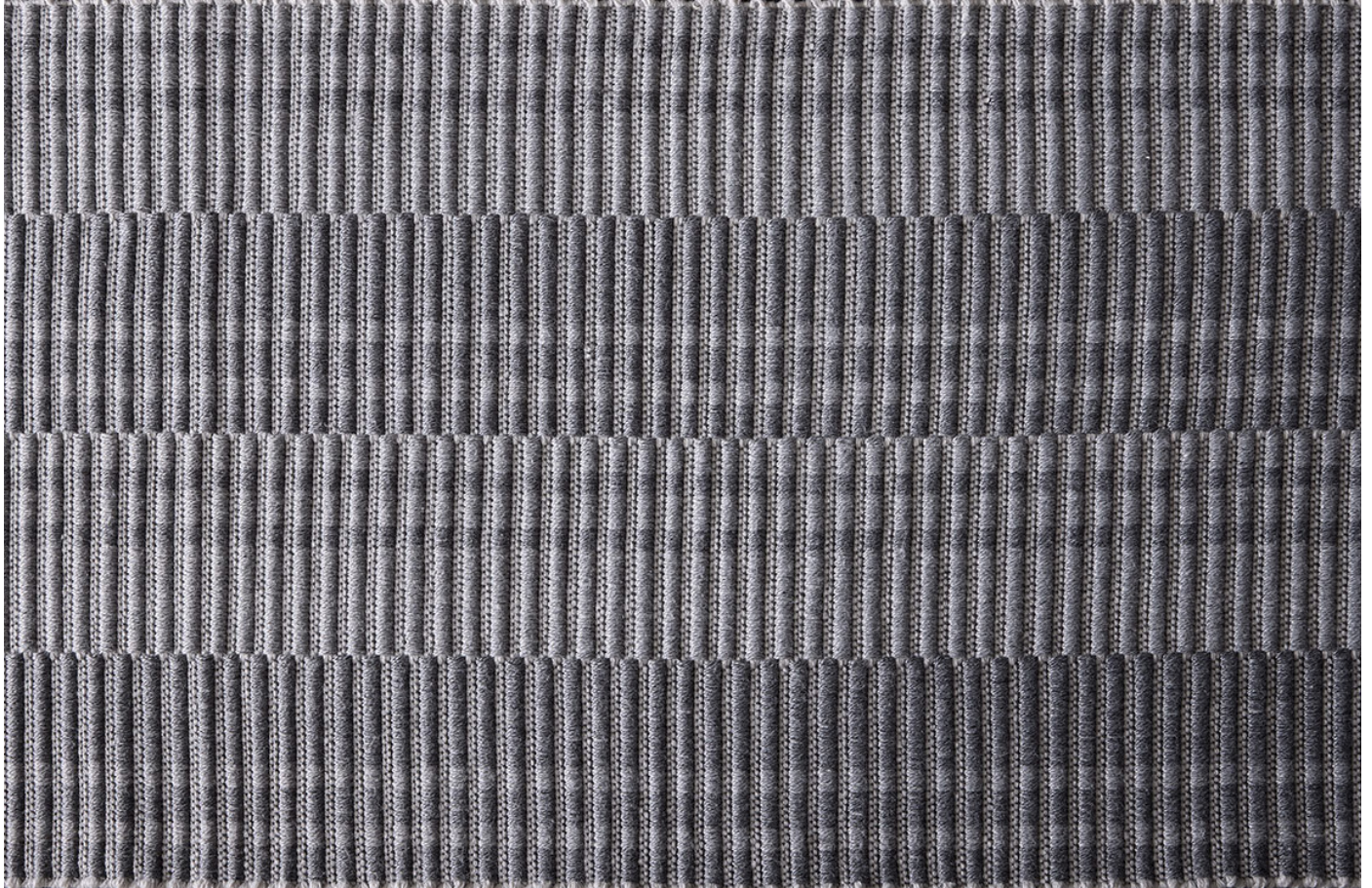
## *Construction*

*Handwoven, Flatweave*

## *Size*

*Shown as sample size rug*

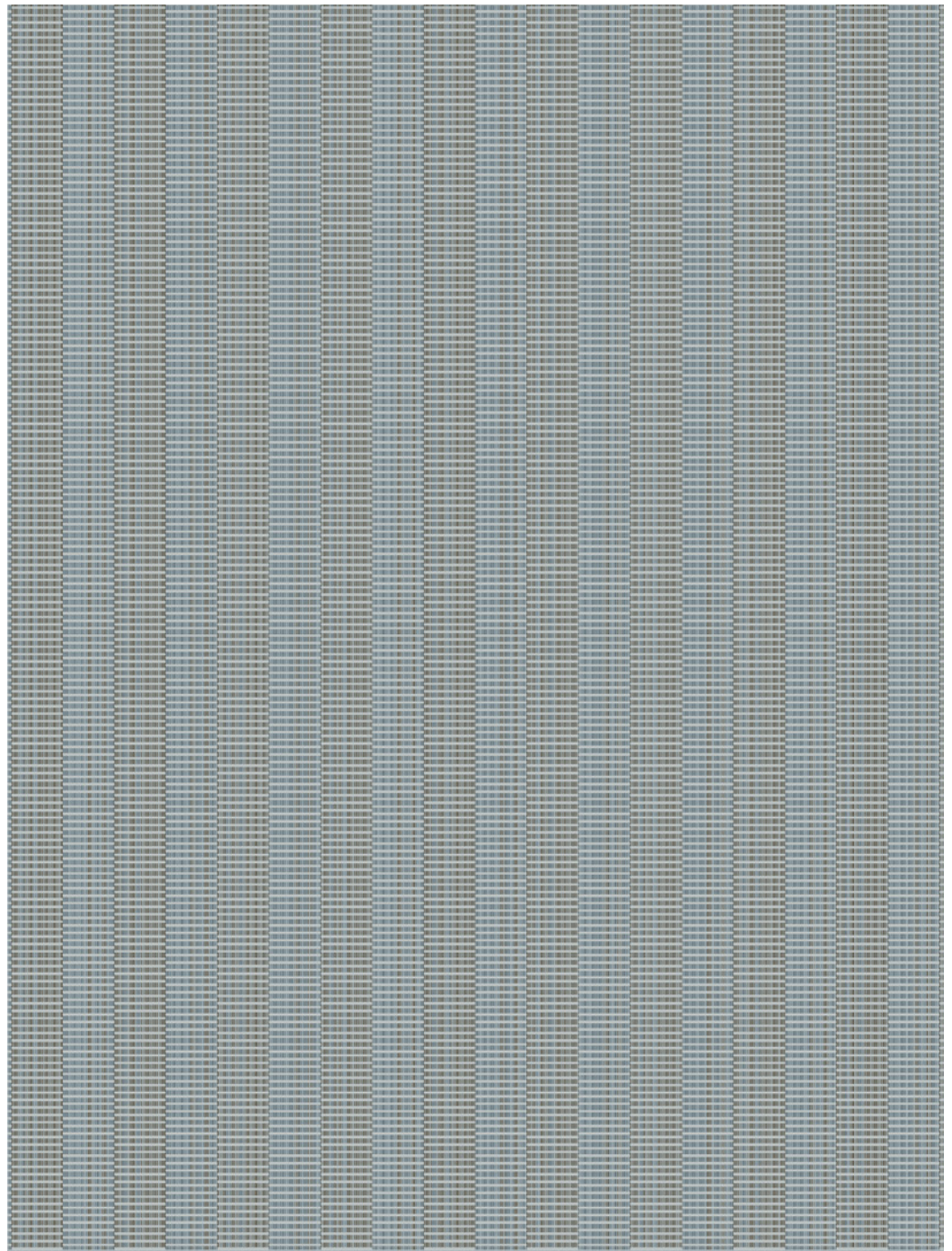
*Avenna*





*Made in India*  
*Handwoven, Flatweave*  
*Wool*  
*Lazuli & Robin*

*Made in India*  
*Handwoven, Flatweave*  
*Polyester (PET)*  
*Avenna*



*Full pattern rendering shown as 9x12' rug*