



SHIIR

RIVVI

Inspired by the handwoven textiles of the Atlas Mountains, our Tulu weave rug reflects the raw beauty of Berber craftsmanship. This technique alternates plush pile with flatwoven rows, creating subtle linear breaks, mimicking the wind-swept ridges of the Sahara. Hand-clipped for definition, it is at once both structured and organic—lightweight, yet rich in dimension. Here, pattern emerges not from ornamentation but from the rhythm of the weave itself – and is shaped by tradition and touch. Available in Persian hand-knotted, and two standard fiber combinations: all wool, and cashmere and wool.

Palladian. Hand-knotted, Persian. Cashmere & Wool (top). Whipple, Hand-knotted, Persian. Wool (bottom)



SHIIR

RIVVI

CASHMERE & WOOL

Zen. Hand-knotted, Persian. Cashmere & Wool.

RIVVI



Origin

Made in India

Material

Cashmere & Wool

Construction

Hand-knotted, Persian

Size

Shown as sample size rug

Palladian



Zen



Asarra



RIVVI



Origin

Made in India

Material

Cashmere & Wool

Construction

Hand-knotted, Persian

Size

Shown as sample size rug

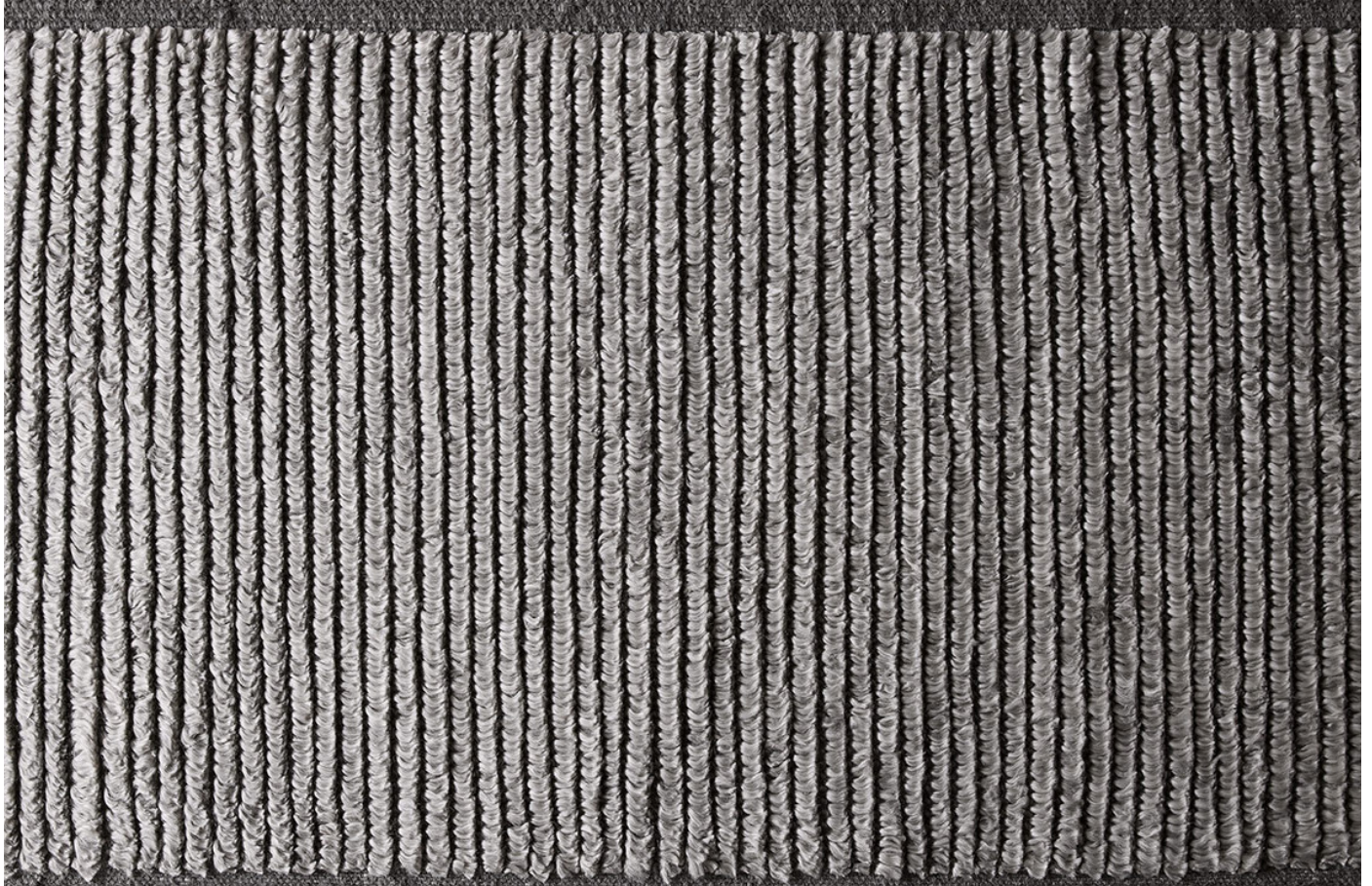
Asarra



Zen



Palladian



RIVVI



Origin

Made in India

Material

Cashmere & Wool

Construction

Hand-knotted, Persian

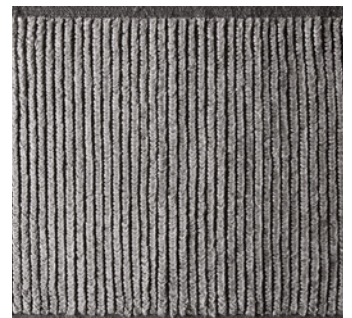
Size

Shown as sample size rug

Asarra



Palladian



Zen





SHIIR

RIVVI

WOOL

Whipple, Hand-knotted, Persian. Wool

RIVVI



Origin

Made in India

Material

Wool

Construction

Hand-knotted, Persian

Size

Shown as sample size rug

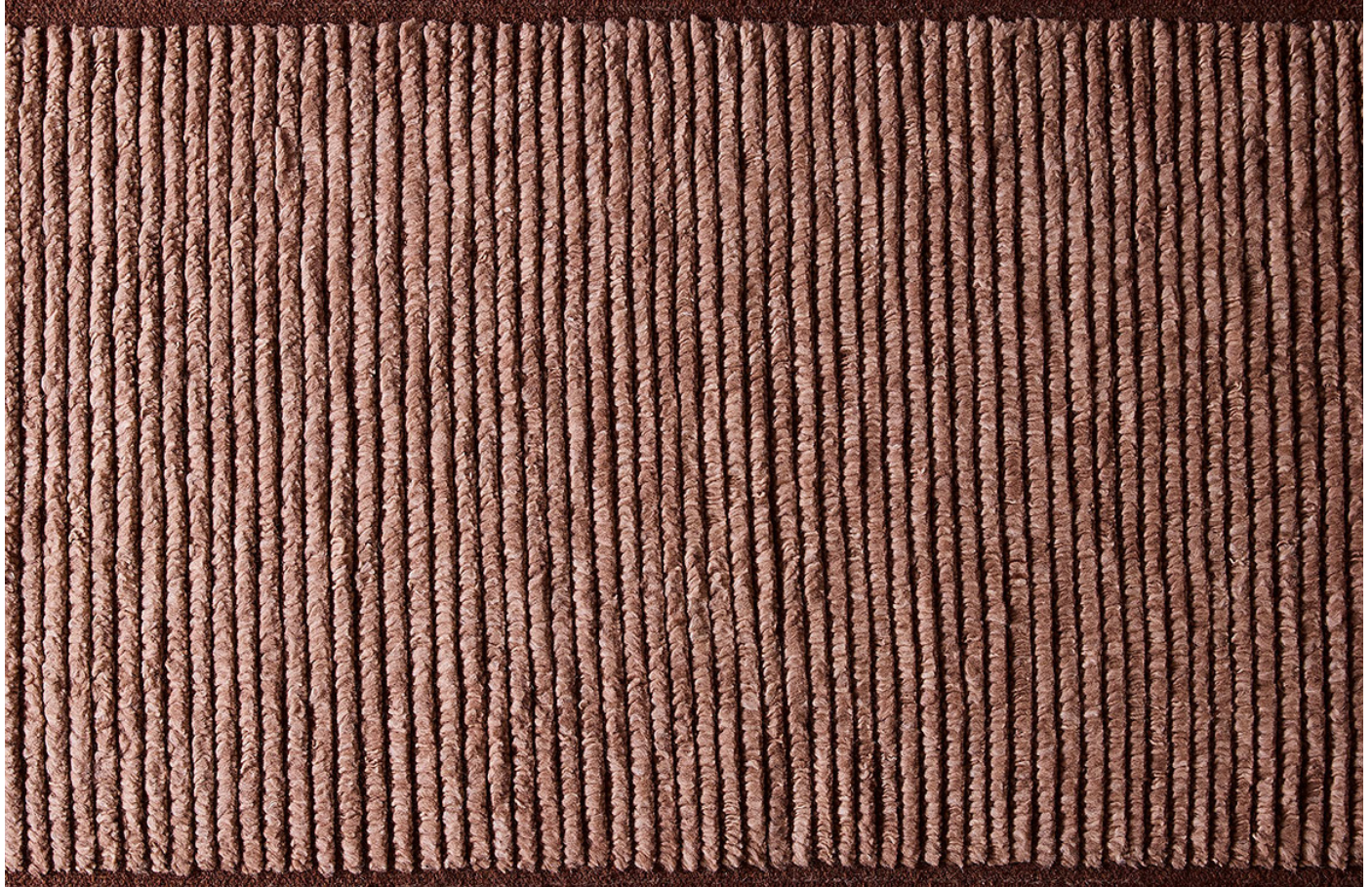
Whipple



Yin



Cenza



RIVVI



Origin

Made in India

Material

Wool

Construction

Hand-knotted, Persian

Size

Shown as sample size rug

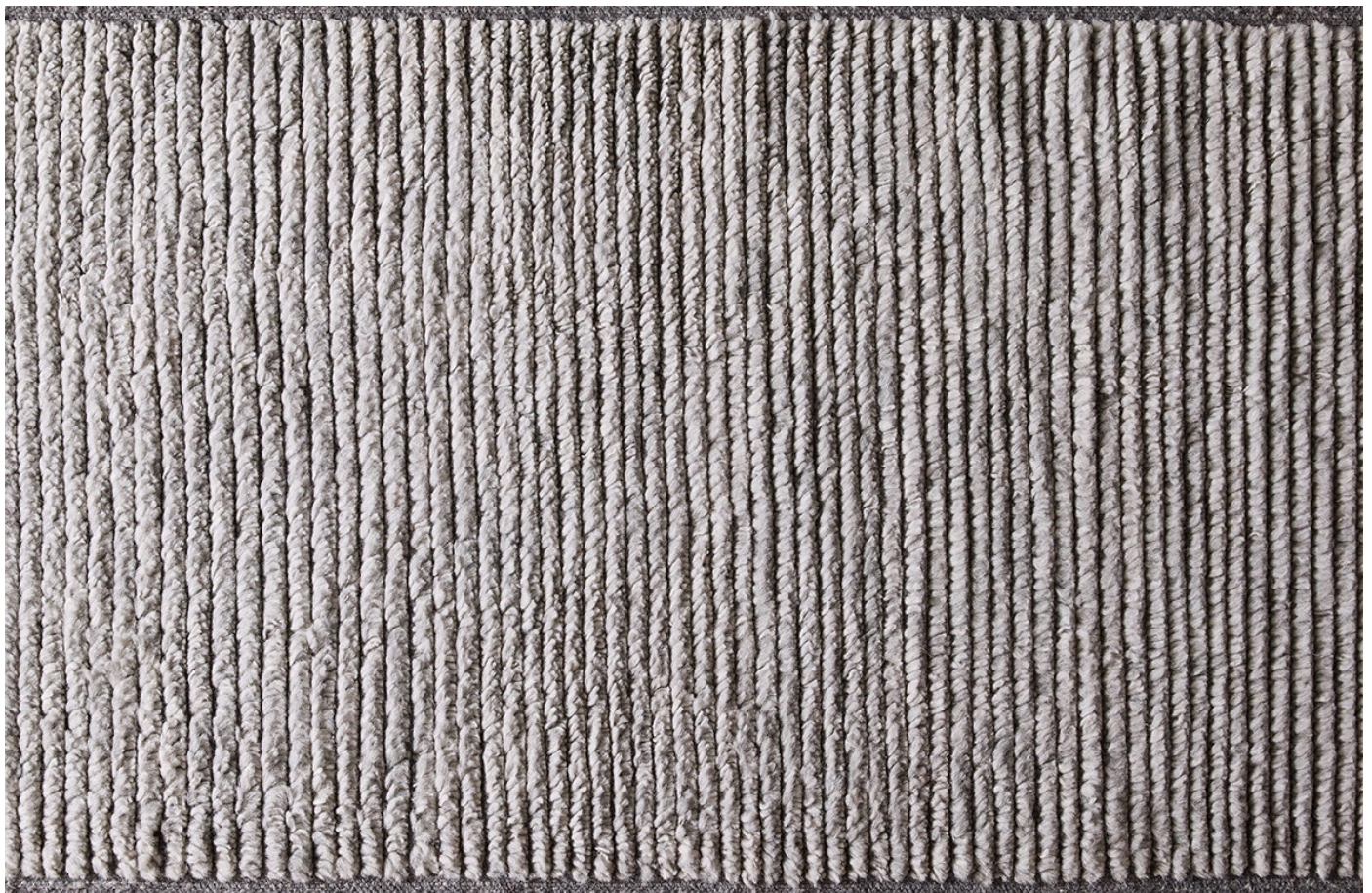
Cenza



Yin



Whipple



RIVVI



Origin

Made in India

Material

Wool

Construction

Hand-knotted, Persian

Size

Shown as sample size rug

Cenza



Whipple



Yin

